



INLINE SEAL™ Diaphragm Seals

Sanitary INLINE™ Diaphragm Seal

Type L981.22

Diaphragm Seals

Application

Food & Beverage and Pharmaceutical industry diaphragm seal to combine with Bourdon tube pressure gauges. Intended for hygienic, rapidly flowing corrosive, contaminated, hot or light to medium viscous pressure media.

Design

Body with cylindrical diaphragm to be installed between Tri clamp® flanges. Requires hydraulic fluid to transmit pressure to instrument.

Process Connection

¾" to 4"

Instrument Connection

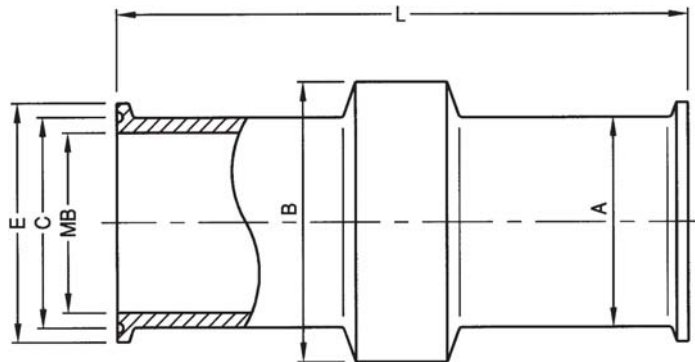
Capillary, ¼" or ½" NPT-female

Suitable Pressure Ranges

15 psi to 600PSI (clamping device dependent)
(for lower ranges consult factory)

Available Options (connections, materials, etc.)

See Selection Guide (over)



MB = INTERNAL DIAMETER
MWP = MAXIMUM WORKING PRESSURE @ 70°F
(Ref. MHHS Clamp)
PRESSURE RATING DEPENDENT ON CLAMPING DEVICE
ALL DIMENSIONS IN INCHES UNLESS OTHERWISE NOTED

SIZE	MWP	A	B	C	E	L	MB
	psi						
¾"	600	0.7	1.34	0.8	0.98	3.8	0.6
1"	600	1.4	1.97	1.7	1.97	4.5	1.0
1.5"	600	1.7	1.97	1.7	1.97	5.7	1.5
2"	550	2.2	2.50	2.2	2.50	6.1	1.9
2.5"	450	2.7	3.10	2.8	3.10	6.1	2.4
3"	350	3.2	3.60	3.3	3.60	6.1	2.9
3.5"	350	3.7	4.20	3.8	4.20	6.1	3.3

To determine the effects of temperature and response time in a specific application, contact the factory for an **Application Questionnaire**. The information provided will allow WIKA Technical Support to accurately model your application parameters using state-of-the-art computer simulation techniques.

ACS L981.22
(ACS 98.04S)

Selection Guide - L981.22

L981.22,1/4X3/4,SS,SS,NONE

Notes

1. Additional sanitary connections are available, contact factory for availability. Maximum working pressure 1,000 PSI @ 100°F or maximum clamp rating.
2. Available for 2-1/2" gauge with minimum pressure span of 100 PSI only.
3. Diaphragm and upper housing material must be the same. Special materials available, contact factory for availability.
4. Upper housing is a process wetted component.

*Items in **bold** are available from stock (subject to prior sales). For optional items, consult factory for current lead-time.*

Options

NONE – No additional options

ELPOL – Electropolishing with '3A' logo etched on seal

3A – '3A' logo etched on seal

Diaphragm Material (See note 3)

SS = 316 stainless steel

HC = Hastelloy® C-276

Upper Housing Material (See notes 3 & 4)

SS = 316 stainless steel

HC = Hastelloy® C-276

Process Connection

3/4 = 3/4" (See note 2)

1.0 = 1"

1.5 = 1-1/2"

2.0 = 2"

2.5 = 2.5"

3.0 = 3"

4.0 = 4"

Instrument Connection

1/4F = 1/4" NPT female

1/2F = 1/2" NPT female

CPL = Capillary connection (To weld capillary directly to seal)

Diaphragm Seal Design (See note 1)

L981.22 = Tri-Clamp®

Options not listed may be available, please consult factory.
Fill Fluid & Mounting options: Please reference data sheet ACS 99.MO

THE MEASURE OF Total Performance™

Ordering Information:

State computer part number (if available) / type number / size / range / connection size and location / options required.

Specifications given in this price list represent the state of engineering at the time of printing. Modifications may take place and the specified materials may change without prior notice

03/07



WIKA Instrument Corporation

1000 Wiegand Boulevard

Lawrenceville, Georgia 30043-5868

Tel: 770-513-8200 Fax: 770-338-5118

<http://www.wika.com> e-mail: diaphragmseal@wika.com